



6 Trentholme Drive, Scunthorpe, DN17 3UL

£320,000

Neutrally decorated throughout, this four bed detached family home is in the ever popular village of Messingham and is ready to move straight in to!

To the ground floor you have a nice airy entrance hall with new oak doors, dining room then to the rear is a modern kitchen and a cozy lounge leading on to the conservatory with access on to the rear garden. There is also a downstairs W.C. Upstairs there are four double bedrooms, the master being a great size with en suite and a further family bathroom.

Outside there is a low maintenance rear garden with turf and seating area, access to the lean to shed that is great for storage and an integral garage and off road parking for multiple vehicles on the block paved driveway. Available for viewings now please call the office to book!



Entrance hall



Conservatory 12'8" x 12'0" (3.88m x 3.67m)



Lounge 15'2" x 14'0" (4.64m x 4.27m)



Landing



Kitchen 13'2" x 10'2" (4.03m x 3.11m)



Dining room 11'6" x 9'1" (3.53m x 2.79m)



Bedroom one 17'7" x 11'10" (5.38m x 3.61m)



Garage 17'9" x 8'2" (5.43m x 2.51m )



En-suite



Bedroom four 9'8" x 7'2" (2.95m x 2.20m)



Bedroom two 13'2" x 8'2" (4.03m x 2.50m)



Family bathroom 8'4" x 5'6" (2.55m x 1.70m)



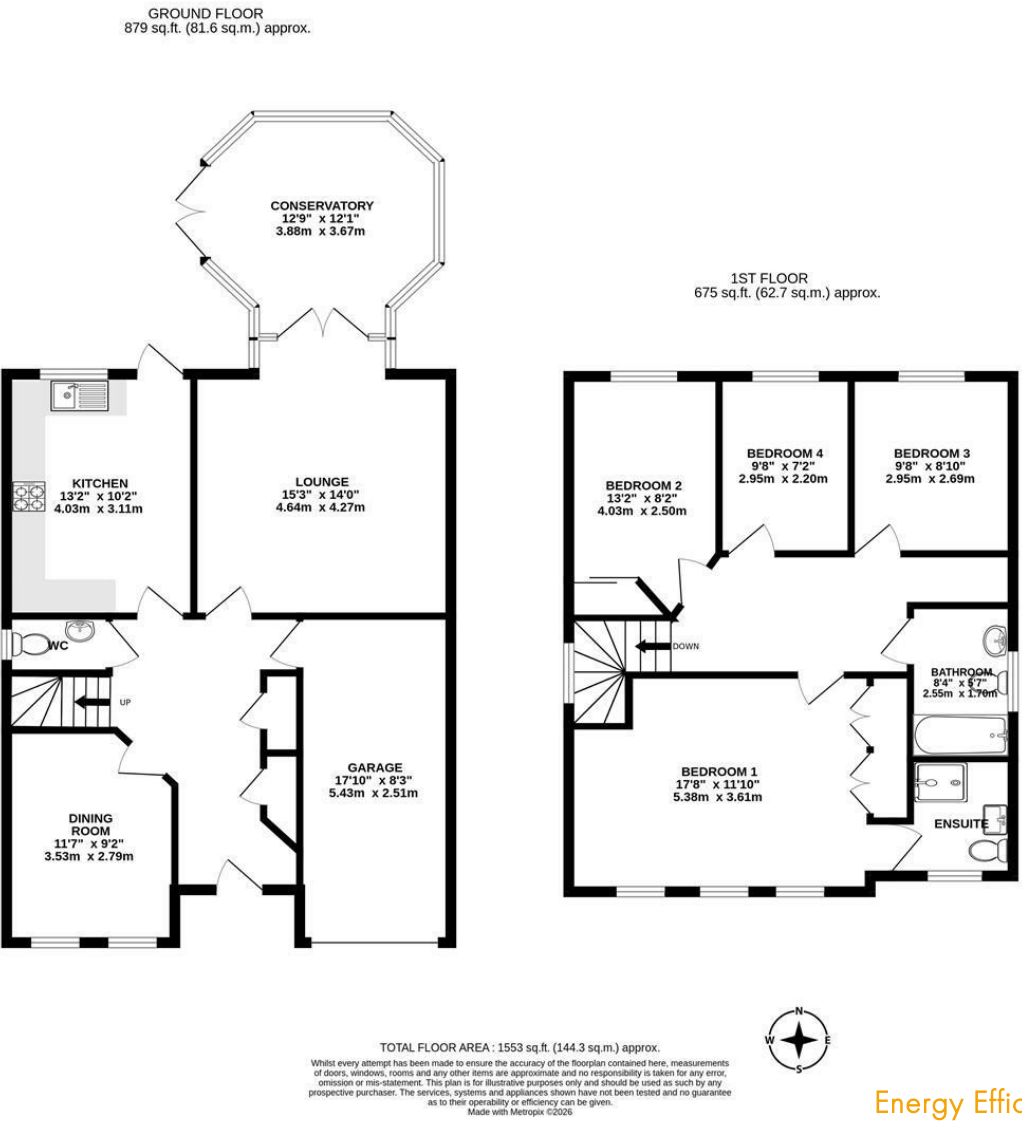
Bedroom three 9'8" x 8'9" (2.95m x 2.69m)



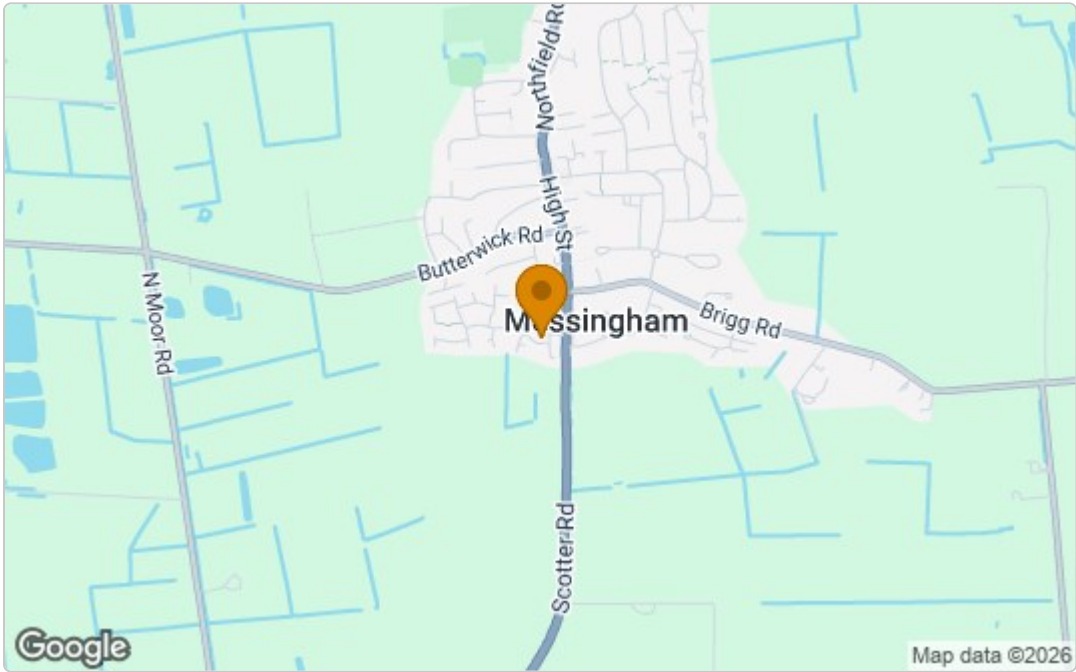
Outside



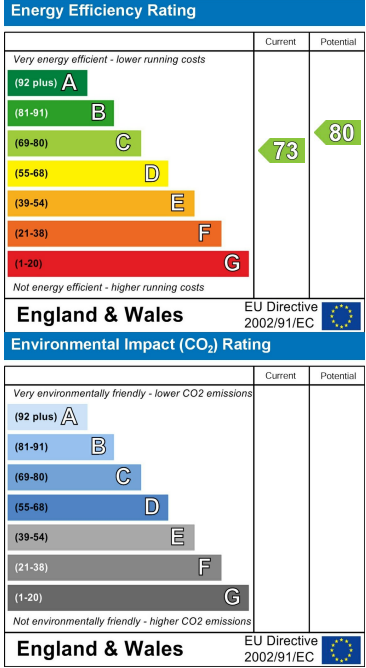
Floor Plan



Area Map



Energy Efficiency Graph



These particulars, whilst believed to be accurate are set out as a general outline only for guidance and do not constitute any part of an offer or contract. Intending purchasers should not rely on them as statements of representation of fact, but must satisfy themselves by inspection or otherwise as to their accuracy. No person in this firm's employment has the authority to make or give any representation or warranty in respect of the property.